

Are physical activity and sedentary screen time levels associated with food consumption in European adolescents? The HELENA study.

Ana Moradell^{1*}, Alba M. Santaliestra-Pasías^{1,2,3}, Raquel Aparicio-Ugarriza⁴, Inge Huybrechts^{5,6}, Aliz Bertalanné Szommer⁷, Maria Forsner^{8,9}, Marcela González-Gross^{4,10,11}, Anthony Kafatos^{12,13}, Odysseas Androutsos^{14,15}, Nathalie Michels¹⁶, Michael Sjöström¹⁷, Jeremy Vanhelst^{18,19}, Kurt Widhalm^{20,21}, Angel Gutierrez²², and Luis A. Moreno^{1,2,3}, on behalf of the HELENA study group²³.

¹ *GENUD (Growth, Exercise, Nutrition and Development) Research Group, Facultad de Ciencias de la Salud, Universidad de Zaragoza, Zaragoza, Spain.*

² *Instituto Agroalimentario de Aragón (IA2), Instituto de Investigación Sanitaria Aragón (IIS Aragón).*

³ *Centro de Investigación Biomédica en Red de Fisiopatología de la Obesidad y Nutrición (CIBEROBn), Universidad de Zaragoza, Zaragoza, Spain.*

⁴ *ImFine Research Group, Department of Health and Human Performance, Universidad Politécnica de Madrid, Spain.*

⁵ *Department of Public Health, Ghent University, Ghent, Belgium.*

⁶ *International Agency for Research on Cancer, Lyon, France.*

⁷ *Department of Pediatrics, Medical Faculty, University of Pécs, Pécs, Hungary.*

⁸ *School of Education, Health and Social Sciences, Dalarna University, Falun, Sweden.*

⁹ *Umeå University, Department of Nursing.*

¹⁰ *Department of Nutrition and Food Sciences-Nutritional Physiology, University of Bonn.*

¹¹ *CIBER: CB12/03/30038 Fisiopatología de la Obesidad y la Nutrición, CIBERObn, Instituto de Salud Carlos III (ISCIII).*

¹² *University of Crete, School of Medicine, Heraklion, Greece.*

¹³ *Argonafton 47, Ilioupolis, Athens, Greece.*

¹⁴ *Department of Nutrition and Dietetics, School of Health Science and Education, Harokopio University, Athens, Greece.*

¹⁵ *Department of Nutrition and Dietetics, School of Physical Education, Sport Science and Dietetics, University of Thessaly, Trikala, Greece*¹⁶ *Department of Public Health, Ghent University, Ghent, Belgium.*

¹⁷ *Unit for Preventive Nutrition, Department of Biosciences and Nutrition at NOVUM, Karolinska Institutet, Huddinge, Sweden.*

¹⁸ *University Lille, CHU Lille, Lille Inflammation Research International Center LIRIC-UMR 995 Inserm, F-59000 Lille, France.*

¹⁹ *University Lille, CHU Lille, Clinical Investigation Center, CIC-1403–Inserm–CHU, F-59000 Lille, France.*

²⁰ *Department of Pediatrics, Medical University of Vienna, Vienna, Austria.*

²¹ *Department of Pediatrics, Private Medical University, Salzburg, Austria.*

²² *Department of Medical Physiology, School of Medicine, University of Granada, Granada, Spain*

²³ *See Appendix.*

*Corresponding author: Facultad de Ciencias de la Salud. Universidad de Zaragoza. Spain. Telf.: +34876553756 E-mail: albasant@unizar.es.

Are physical activity and sedentary screen time levels associated with food consumption in European adolescents? The HELENA study.

Abstract:

One of the current main public health problems is the prevalence of obesity in children. Unhealthy lifestyle behaviors such as poor dietary habits, high sedentary screen time (SST) and low levels of physical activity (PA) have a strong tendency to track from childhood into adulthood. The aim of this manuscript is to assess the association between meeting or not the PA and SST recommendations and the consumption of different food groups.

Data was obtained from a sample of European adolescents from the multicenter cross-sectional HELENA study. 1448 adolescents from 8 cities were included. Physical activity was objectively measured by accelerometry and dietary intake by 24-h dietary records. Adolescents were grouped according to PA and SST recommendations.

In both sexes, intake of savory snacks was higher in those groups who did not meet any of the recommendations ($p<0.05$). For males, those who met both recommendations were more likely to drink/eat milk, yogurt, and water ($p<0.05$). Those not meeting recommendations were more likely to drink sugar-sweetened beverages ($p<0.05$). For females, those not meeting recommendations were less likely to eat fruits and vegetables and more likely to have a higher intake of fats and oils ($p<0.05$).

In conclusion, those adolescents meeting PA and SST recommendations had a higher intake of healthy foods, like fruit and vegetables and dairy products. However, the negative relationship unhealthier food and SST is stronger in males and independently of PA. More studies assessing the combined effect of both PA and SST regarding dietary habits in children and adolescents are needed.

Keywords: word; physical activity, sedentary behavior, diet, food intake, adolescents, HELENA study

Introduction

The prevention of obesity during childhood and adolescence still being on the focus of researchers. Although it seems to be plateauing during last years, its prevalence still being high in this population (1). Obesity is multifactorial, however, it is known that potential modified factors such as movement behaviors (2) as well as have healthier dietary intakes (defined by the EAT-Lancet as those consisting of fresh food, whole grains, legumes, nuts, and unsaturated oils, low to moderate amounts of seafood and poultry, and includes no or a low quantity of red meat, and processed food (3)) plays an important role on its development acting directly on energy balance (4).

Evidence shows that movement behaviours (physical activity and sedentary time) are related to food choices. Both, physical activity (PA) and sedentary behaviours do not occur in isolation (5). Thus, to cluster groups of individuals with different behaviors would be more accurate than study them separated. Only in this way, we could identify groups at higher risk of developing chronic diseases as other authors have started to do (6) and more effective interventions could be designed.

PA defined as any bodily movement that requires energy expenditure, may reduce the risk of obesity and other non -communicable chronic diseases and improve children's mental health and their ability to learn (7). PA levels decline across the age, especially when children become adolescents. Globally, 81% of adolescents aged 11–17 years were insufficiently physically active (7). In Europe, similar prevalence have been observed (8) in which high proportion of adolescents does not meet the PA recommendations from the World Health Organization (WHO) of at least 60 min/day of moderate to vigorous physical activity (9). On the other hand, sedentary behaviours and concretely sedentary screen time (SST), defined as time spent watching screen-based entertainment while sitting, reclining or lying (9) takes a huge part in the daily routines of this population. During weekdays, one third of European adolescents exceed the 2 h/day limit based only on their TV viewing, whereas six out of ten exceed it during weekend days (10). Moreover, it is important to highlight that sedentarism and inactivity do not occur in isolation and could coexist (11).

Both PA and SST have been associated with obesity and other cardiovascular diseases in children and adolescents (7,8). Several studies have been related individually

these behaviours with dietary patterns. The most active adolescents seem to consume more fruit and vegetables (F&V), dairy products and fresh foods(14). In contrast, TV viewing showed a clear association with unhealthy dietary habits, such as high consumption of energy-dense snacks, fast foods and sugar sweetened beverages , and low consumption of F&V (11,15). To the author's knowledge, the combined effect of PA and SST on food consumption in adolescents has not been described before.

The aim of this paper was to assess the associations between the combined effect of meeting or not the PA and SST recommendations with consumption of different food and beverages groups and to explore differences between sexes in movement behaviors and dietary intake in a European sample of adolescents. The possible combined effects of multiple lifestyle behaviors would be the key for design better public health interventions focus on non-communicable diseases prevention.

Materials and Methods

Study Sample

The present report is an cross-sectional study performed in the framework of the Healthy Lifestyle in Europe by Nutrition in Adolescence Cross-Sectional Study. It is a European Union funded project on lifestyle and nutrition among adolescents from 10 European cities: Athens, Heraklion, Dortmund, Ghent, Lille, Pécs, Rome, Stockholm, Vienna, and Zaragoza (16). Briefly, the main objective of the study was to obtain reliable and comparable data of a large sample on a variety of nutrition and health related parameters using a standardized procedure.

The inclusion criteria were age from 12½ to 17½ years, not participating simultaneously in another clinical trial, and free of any acute infection during the week before inclusion (17). From October 1, 2006, through December 31, 2007, a total of 3528 adolescents (46.9% boys) were recruited and met the study inclusion criteria. For the purposes of the current analysis, only those who had at least 3 days of PA recording with a minimum of 8 or more hours of registration per day, had completed at least 75% of the sedentary questionnaire (18), and had two available 24hours dietary recalls (19) were included. Participants from Heraklion (Greece) and Pécs (Hungary) (n = 678) were not included in subsequent analyses due to insufficient dietary intake data. Finally, 1448

adolescents were included in the present analysis.

To guarantee that the heterogeneity of social background of the population would be represented, schools were randomly selected after stratification on school zone or district. Up to 3 classes from 2 grades were selected per school. All the adolescents within selected classrooms were invited to participate. Only adolescents from classrooms where more than 70% of the individuals consented to participate were included. Detailed on sampling procedures and study design of the HELENA study have been reported elsewhere (16).

Ethic compromise

This study was conducted according to the guidelines laid down in the Declaration of Helsinki and all procedures involving human subjects were approved by the Ethical Committee of each city involved as it is described in **Supplementary 1** (20). A signed informed consent was obtained from both the adolescents and their parents/ guardians.

Physical Activity

Adolescents were asked to wear an accelerometer (ActiGraph MTI GT1M; ActiGraph LLC, Pensacola, Florida) on their hip during all walking hours for 7 consecutive days, starting on the day immediately after they received the monitor during school classes. Adolescents returned the accelerometers to the researchers 8 days later. Participants were instructed to wear the accelerometer on their lower back, attached by an elastic belt, during all waking hours. Since the monitors were not waterproof, participants were asked to take them off while bathing or swimming. The sampling interval (epoch) was set at 15 seconds (21). Data were downloaded into a computer using the manufacturer's software and were later analyzed centrally to ensure standardization with an ad hoc Visual Basic data reduction program. The rough data of all participants were analysed centrally to ensure standardization. We excluded from the analysis bouts of 20 continuous minutes of activity with intensity counts of 0, considering these periods to be non-wearing time (18,22). A recording of more than 20,000 counts/minute was considered a potential malfunction of the accelerometer, and the value was excluded from the analyses. At least 3 days (2 week days and 1 weekend day) of recording with a minimum of 8 or more hours of registration per day were necessary for the adolescent to

be included in the study (18,22). Monitor wearing time was calculated by subtracting non-wear time from the total registered time for the day. In the present study, PA levels are shown as the amount of time engaged moderate to vigorous physical activity. We calculated the time engaged in moderate to vigorous physical activity (defined as 3 or more metabolic equivalents) on the basis of a standardized cut-off of 2,000 counts (18). Moderate to vigorous physical activity was dichotomized into <60 min/day and ≥ 60 min/day, according to the PA recommendations (23,24).

Sedentary Screen Time

SST was assessed by using a self-reported questionnaire. It was administered during the school hours as described elsewhere. This questionnaire was tested for validity and reliability and it was shown that the questionnaire is adequate to be used in adolescents (25). The questionnaire included daily minutes (at week and weekend days) of the following sedentary items: TV viewing, playing with computer games and other videogames, using internet for study and non-study reasons, and studying/homework (lessons not included). Weekly time was calculated taking the mean time in the selected category and applying the following formula: $[(\text{weekdays} \times 5) + (\text{weekend} \times 2)]/7$. Adolescents SST was dichotomized based on the WHO and American Academy of Paediatrics' recommendations. Therefore the sample was divided into those who spent <2 h and those who spent ≥ 2 h (9,26).

Dietary Data

To obtain dietary intake data, the validated HELENA-DIAT 24 hour dietary recall (24-HDR) software was used (19). The 24-HDR assessment tool was a computer program that guide the user through six 'meal occasions', embedded within questions and images that help adolescents to remember what they ate. For each meal occasion, adolescents are invited to select all food items eaten at that occasion. For each selected item, one or more extra screens are provided to gather quantitatively detailed information on portions and portion sizes. Several measurement units (for example, spoon, can, glass, gram and so on) are used (Images 1,2 and 3). The program was described in detailed by Vereecken et al. (19).

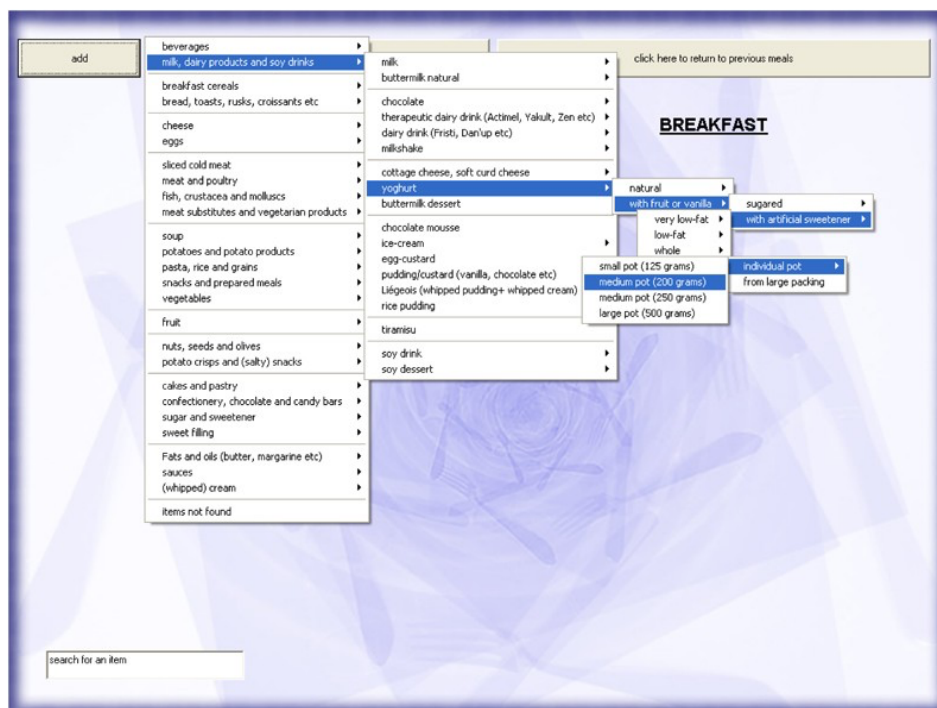


Image 1. Illustration of the menu structure.

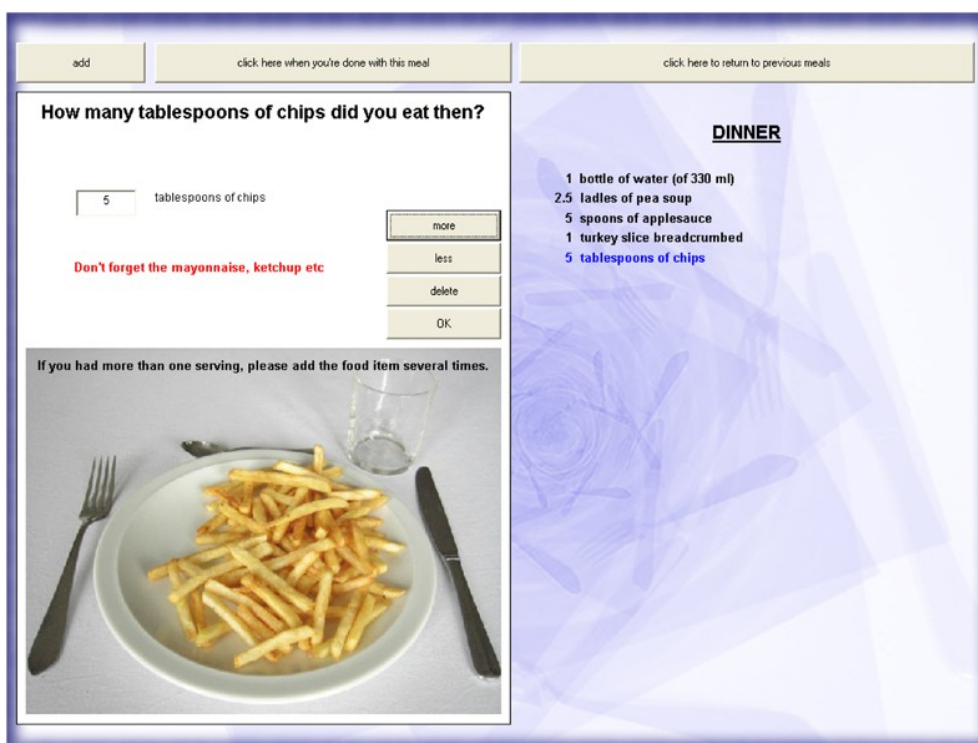


Image 2. Illustration of the portion size selection.

**Below you find an overview of what you ate and drank yesterday.
Please verify that this is correct. You can further modify or complete
your menu by clicking on the relevant meal occasions.**

<div>remarks</div> <div>If you are ready, click here.</div>		
<u>BREAKFAST</u> 4.00 tablespoons of muesli 1.00 pot of yoghurt with artificial sweetener (200 grams) 50.00 grams of grapes 1.50 cups of herbal/fruit tea with lemon	<u>LUNCH</u> 1.50 cups of herbal/fruit tea with lemon 3.00 large slices of wholemeal bread 1.50 slices of hard light cheese 1.50 slices of smoked/salted pork, filet de Saxe, filet de York 1.00 tablespoon of jam, confiture 1.00 leaf of lettuce 2.00 slices of tomatoes	<u>DINNER</u> 1.00 bottle of water (of 330 ml) 2.50 ladles of pea soup 5.00 spoons of applesauce 1.00 turkey slice breadcrumbed 5.00 tablespoons of chips 1.00 pot of chocolate mousse
<u>MORNING SNACKS</u> 1.00 large banana	<u>AFTERNOON SNACKS</u>	<u>EVENING SNACKS</u> 3.00 tablespoons of peanuts 1.25 glasses of orange juice

Image 3. Illustration of the overview screen.

The adolescents completed the questionnaire during school time, after dieticians/ researchers instructed them on how to fill in this 24-HDR as accurately as possible. The participants were allowed to ask questions and assistance(19). After completion, the recall was checked for completeness. Since the questionnaire was filled in during school time, no data could be collected about the dietary intake on Fridays and Saturdays.

A repeated 24-HDR was selected as the most suitable method to get population means and distributions by the European Consumption Survey Method project (27). Furthermore, it was suggested that usual intakes should be estimated by statistical modelling techniques using two non-consecutive 24hours dietary recalls (28) . Every participant was asked to fill in the HELENA-DIAT on arbitrary days, twice in a time-span of 2 weeks. A validation study using the HELENA-DIAT (19), showed good agreement between self-reported and interviewer-administered 24hours dietary recalls. The HELENA-DIAT tool has been indicated as a good method to collect detailed dietary information from adolescents and was received well by the study participants.

To calculate energy and nutrient intake, and to unify all different country foods,

the data was linked to the German Food Code and Nutrient Data Base (BLS (Bundeslebensmittelschlüssel), version II.3.1, 2005), considered the most comparable and complete database. The usual dietary intake was estimated by the Multiple Source Method (MSM) (27). Dietary data were analyzed for average energy intake, macro- and micro- nutrients, and also food and beverages consumption groups (29).

All the included food groups were reorganized into 9 groups (**Supplementary 2**), as following: 1.F&V, 2.Sugar-sweetened beverages ; 3.Water; 4.Cereals; 5.Savory snacks; 6.Sweetened snacks; 7.Fats and oils; 8.Fish, meat and eggs; 9.Milk and 10. Yogurt. Selection of these groups was based on their relationship to the health related practices and to the prevalence of overweight and obesity (30).

Anthropometrics Measurements

Weight and height of the adolescents were measured by trained researchers in a standardized way (31). Weight was recorded to the nearest 0.1 kg, using an electronic scale (SECA 861) and height to the nearest 0.1 cm, using a telescopic height measuring instrument (SECA 225). Light indoor clothing could be worn, excluding shoes, long trousers and sweaters. Body Mass Index (BMI) was calculated from their measured height and weight ($BMI = \text{weight divided by height squared, [kg/ m}^2\text{]}$). International age- and sex-specific cut points were used to assess their BMI-category namely underweight, normal weight, overweight or obese (32).

Pubertal stage was assessed according to the method of Tanner and Whitehouse (33), as described elsewhere (31).

Socioeconomic status

Collected demographic data included information on sex, age, and socioeconomic status (SES) by means of a standardized self-reported questionnaire. As a proxy of family SES maternal education was used. The adolescents reported their parents' educational level as primary education, lower secondary education, higher secondary education or higher education/university degree, and was recoded into a 2-point scale, namely a low (lower education and lower secondary) or high (higher secondary and higher education/university degree) education level (31).

Statistical Analyses

Statistical analyses were performed using Statistical Package for the Social Science (SPSS) version 20. All analyses were sex-specific because of observed significant differences in food and beverages consumption by sex. According to the nature of the studied variables, the chi square test and the analyses of variance (ANOVA) were used to compare sample characteristics.

PA and SST variables were recoded into separate groups taking into consideration if the adolescents met or not both recommendations, and was based on previous studies (34). Four groups were created: Group 1, adolescents who did not met PA and SST recommendations (≥ 2 h/day SST and <60 min/day of PA); Group 2, those who met the SST recommendations (<2 h/day SST), but did not meet the PA recommendations (<60 min/day PA); Group 3, those who did not meet SST (≥ 2 h/day of SST) and who met PA recommendations (≥ 60 min/day of PA); and Group 4, those adolescents who met both the PA and SST recommendations(<2 h/day of SST and ≥ 60 min/day of PA).

Differences in food consumption were analyzed by one-way analysis of covariance (ANCOVA) and Bonferroni post hoc test, adjusted by BMI, maternal educational level, Tanner stage and total energy intake.

Additionally, a generalized linear model was used to examine the relationship between groups based on the compliance or not of the PA and SST recommendation and the consumption of the different food and beverage groups, adjusted by maternal education, Tanner stage, BMI and energy intake. Values are presented as adjusted β values (estimated unstandardized regression coefficients) and 95% confidence intervals (CI). All statistical tests corresponding two-sided significant level 0.05 were considered statistically significant. Bonferroni correction was used for post-hoc multiple comparison test.

Results

Table 1 shows the descriptive characteristics of the sample. Significant differences ($p<0.05$) were observed between sexes in pubertal stage, the proportions of adolescents included in each category based on the PA and SST recommendations, and in the consumption of several food groups as cereals, fish, meat and eggs, milk, yogurt,

savory and sweet snacks, fats and oils, and sugar sweetened beverages.

Table 2 shows the results of the ANCOVA test, separately by sexes. In males, those allocated in Group number 4 had higher consumption of yogurt than those allocated in Group number 1 ($p < 0.05$). In the female group, those allocated in Group 1 had higher consumption of fish, meat and eggs than Group 2 and lower consumption of cereals when compared with Group 3 participants who only meet the PA recommendations ($p < 0.05$).

Finally, the results of the generalized linear model presented in **Table 3** and in Supplementary 3 (**Figure 1a and 1b** for males, and **Figure 2a and 2b** for females) using the Group number 4, those who meet all the recommendations, as the reference group.

In males, Group 1 had lower consumption of water, milk and yogurt, and higher consumption in savory snacks and sugar sweetened beverages when compared to Group 4. Males allocated in Group 2 had less consumption of water, milk and yogurt than those allocated in the reference group. Furthermore, males in Group 3 had higher consumption of savory snacks and sugar sweetened beverages; and lower intake of milk and yogurt, than those allocated in Group 4. No significant associations were observed in the rest of the food groups.

For females who did not meet any recommendation (Group 1) had lower consumption of F&V and a higher consumption of fish, meat and eggs, fats and oils, and savory snacks than those adolescents in Group 4. Moreover, those allocated in groups 2 and 3 had a higher consumption of fats and oils when compared to those from the reference group.

Discussion

Overall, main result of the present study is that adolescents not complying with PA and SST recommendations showed significant associations with a high consumption of energy dense foods and low consumption of foods considered as healthy such as F&V. Moreover, these associations are different depending on sex.

To our knowledge, this is the first study assessing the combined association of PA and SST recommendations and food intake in adolescents. To describe this combined effect of PA and SST is of importance to elucidate healthy or unhealthy dietary patterns

depending on movement behaviors and to identify groups at higher risk of developing obesity. This would allow to address specific intervention to prevent obesity of this pathology.

There are no studies investigating these same groups, however, results can be compared with other studies, which have evaluated diet related to either PA or SST separately. In general, similar association have been reported in different population groups especially, between high moderate to vigorous physical activity levels and healthy dietary habits (high consumption of F&V and dairy products) (35–38) and SST with unhealthy dietary habits (low F&V consumption, energy-dense snacks, sugar sweetened beverages, and fast foods) (39), which are globally in concordance with our results. Between those studies in concordance there are large database such as those from the Global school-based Student Health Survey (40), United States National Health and Nutrition Examination Survey (41), National Health and Nutrition Examination Survey (42) and large sample studies from Canada (43), Germany (38). It is important to highlight that information about PA from this large samples were collected by questionnaires (38,43,44) and they are needed to be contrasted objectively as it has been done in the present study using accelerometers. In addition, although information from this devices do not difference between sport modalities, some of these studies reported similar results when considered physical exercise and daily physical activity separately (38), which lead to think results would not differ from ours.

Nevertheless, as we mentioned before, the present study reveals different associations between sexes. While males in those sedentary groups, irrespectively of PA showed a high consumption of sugar sweetened beverages and snacks, only those females who did not met PA and STT recommendations showed lower intakes of F&V. These results, probably, could be explained because females usually have healthier choses not only related to food but also with movement behaviors (45) and thus, only patterns considered as unhealthier were found simultaneously only in the group which did not meet any of the recommendation. Same reason could be apply for the higher consumption of fat and oil in those who do not meet any of the recommendations and that could be related to higher intakes of fried food and its relation to STT (36). Though, females seem to be less active than males and also report lower intakes of F&V, as in other studies, which may influence our results. In addition, males consumed more unhealthier products

along all groups irrespective to PA which could displace the intake of F&V leading to show these differences between sexes. There is a large literature showed associations between F&V consumption taking into consideration PA (8,37,46) and SST (39,47).

As it has been mentioned, SST has been strongly related with high savory snacks (48) or sugar sweetened beverages (38), overall during tv as they are more exposed to sugar and savory processed food during tv advertisement (49), but also during videogames (40). In line to our results, none of the studies found associations between time spent in moderate to vigorous physical activity with sugar sweetened beverages consumption (37,46) neither with , the consumption of fast foods and savory snacks(35) and the frequency of snacking (37,46). Koehler et al. show also in males a positive relation between PA and intakes of sugared products (41). In addition, Park et al. found that lower intakes of water associated with higher consumptions of snacks and sodas, while Sui et al. found that water intake was associated with higher levels of PA (50), which are in line with our results and explain why PA males could have simultaneously higher intakes of both drinks. Nevertheless, it would be interesting to study if the consumption of this food that are related to cardiovascular diseases, are counteract by the movement patterns as PA seems to reduce the negative effect of sedentarism in health (51). For example, the interrelation of these behaviors in the attenuation of inflammation biomarkers (52,53) related to cardiovascular diseases.

Regarding other food groups, females who did not meet any PA or SST recommendations showed a higher consumption of animal protein sources compared with those who meet both recommendations. However, there is scarce evidence associating this behaviors (37) and more studies are needed, specifically, studies involving also the quality of these intakes and their health contribution in relation with movement behaviors as its consumption has been associated with higher adiposity (54,55).

Finally, milk and yogurt consumption was higher in males who met both PA and SST recommendation compared with those not meeting the same recommendations; in concordance another report of the HELENA sample (8), with this European children population (56) and in this athletic sample (46), while no associations were found for females . High consumption of dairy products was associated with lower body fat, lower CVD risk, and high cardiorespiratory fitness (57), for all these reasons, our results suggest that dairy products could be part of a healthy dietary lifestyle.

Certain weaknesses and strengths need to be commented. First, the cross-sectional design of the study should be mentioned. Moreover, we do not have representative samples of each country. Also, groups were designed based on complying or not with PA and SST recommendations and were therefore unbalanced which could influence results. Accelerometer information does not register type of exercise or sport modalities practiced. However, accelerometry is an objective and validated technique. Moreover, food consumption and SST were self-reported. However, both questionnaires have been validated (21,25). Another strength of the study was the large and culturally diverse sample from southern, western, eastern and northern Europe, and the standardized and harmonized procedures. Moreover, even our results are collected in 2008, similar or even worse trend in lifestyles behaviors have been observed which increase validity of our results.

Conclusion

Dietary habits are related to a combination of PA and SST. Those males who did not meet any recommendations were more likely to consume savory snacks and SSB and less likely to consume yogurt, milk and water than those who met PA and sedentary recommendations. Those females who spent less time in PA and more time in SST were more likely to consume savory snacks and fat and oil than those who meet both recommendations. Also, those who did not meet any recommendation were less likely to consume F&V than those who meet both recommendations.

More studies assessing the combined effect of both PA and SST regarding dietary habits in children and adolescents are needed in order to study the physiological impact of these behaviors. The effect of combined groups in a longitudinal cohort could be critical to develop obesity prevention programs based on promoting physical activity and better eating habits. Our results suggest that different interventions should be developed depending on the sexes; to promote healthy snacking during sedentary time in males and to promote F&V intakes in across all females but overall, in those less active and more sedentary females, for who energy dense food also should be avoided.

Acknowledgements:

We thank all members of the study teams (Supplementary 4) and especially the adolescents and their parents for their participation in the study. This work was carried out as part of the HELENA study (www.helenastudy.com/). We gratefully acknowledge the financial support of the European Community sixth RTD Framework Programme (Contract FOOD-CT-2005-007034). The content of this article reflects only the authors' views, and the European Community is not liable for any use that may be made of the information contained therein.

Fundings: European Community sixth RTD Framework Programme (Contract FOOD-CT-2005-007034).

Declaration of interest: None declared.

Data availability: The data presented in this study are available for further scientific analysis on request from the coordinator of the HELENA study to the following e-mail: Imoreno@unizar.es.

References

1. WHO European Childhood Obesity Surveillance Initiative (COSI) Report on the fourth round of data collection, 2015–2017 (2021). 2021 May 11;
2. Who WHO. Global recommendations on physical activity for health. Geneva: World Health Organization. 2010;60.
3. Willett W, Rockström J, Loken B, Springmann M, Lang T, Vermeulen S, et al. Food in the Anthropocene: the EAT–Lancet Commission on healthy diets from sustainable food systems. *The Lancet*. 2019 Feb 2;393(10170):447–92.
4. Hill JO, Wyatt HR, Peters JC. Energy balance and obesity. *Circulation*. 2012 Jul 3;126(1):126–32.
5. Ottevaere C, Huybrechts I, Benser J, et al. Clustering patterns of physical activity, sedentary and dietary behavior among European adolescents: The HELENA study. *BMC public health*. 2011 May;11:328.
6. Santaliestra-Pasías AM, Mouratidou T, Reisch L, et al. Clustering of lifestyle behaviours and relation to body composition in European children. *The IDEFICS study*. *European journal of clinical nutrition*. 2015;69(7):811–6.
7. World Health Organization. Report of the Commission on Ending Childhood Obesity. Geneva; 2016.
8. Ottevaere C, Huybrechts I, Béghin L, et al. Relationship between self-reported dietary intake and physical activity levels among adolescents: The HELENA study. *International Journal of Behavioral Nutrition and Physical Activity*. 2011;8(1):1.
9. Bull FC, Al-Ansari SS, Biddle S, Borodulin K, Buman MP, Cardon G, et al. World Health Organization 2020 guidelines on physical activity and sedentary behaviour. *British Journal of Sports Medicine*. 2020 Dec 1;54(24):1451 LP – 1462.
10. Santaliestra-Pasias AM, Mouratidou T, Verbestel V, et al. Physical activity and sedentary behaviour in European children: the IDEFICS study. *Public health nutrition*. 2014 Oct;17(10):2295–306.
11. Fletcher E, Leech R, McNaughton SA, et al. Is the relationship between sedentary behaviour and cardiometabolic health in adolescents independent of dietary intake? A systematic review. *obesity reviews*. 2015;16(9):795–805.
12. Biddle SJH, Pearson N, Ross GM, et al. Tracking of sedentary behaviours of young people: a systematic review. *Preventive medicine*. 2010 Nov;51(5):345–

13. Moliner-Urdiales D, Ruiz JR, Ortega FB, et al. Association of objectively assessed physical activity with total and central body fat in Spanish adolescents; The HELENA Study. *Int J Obes*. 2009 Jul 14;33(10):1126–35.
14. Elder SJ, Roberts SB. The effects of exercise on food intake and body fatness: a summary of published studies. *Nutrition reviews*. 2007 Jan;65(1):1–19.
15. Pearson N, Biddle SJH. Sedentary behavior and dietary intake in children, adolescents, and adults. A systematic review. *American journal of preventive medicine*. 2011 Aug;41(2):178–88.
16. Moreno LA, De Henauw S, Gonzalez-Gross M, et al. Design and implementation of the Healthy Lifestyle in Europe by Nutrition in Adolescence Cross-Sectional Study. *International journal of obesity (2005)*. 2008 Nov;32 Suppl 5:S4-11.
17. Moreno L, González-Gross M, Kersting M, Molnár D, de Henauw S, Beghin L, et al. Assessing, understanding and modifying nutritional status, eating habits and physical activity in European adolescents: The HELENA (Healthy Lifestyle in Europe by Nutrition in Adolescence) Study. *Public Health Nutrition*. 2008 Mar 6;11(03):288–99.
18. Ruiz JR, Ortega FB, Martinez-Gomez D, Labayen I, Moreno LA, De Bourdeaudhuij I, et al. Objectively Measured Physical Activity and Sedentary Time in European Adolescents: The HELENA Study. *American Journal of Epidemiology*. 2011 Jul 15;174(2):173–84.
19. Vereecken CA, Covents M, Sichert-Hellert W, et al. Development and evaluation of a self-administered computerized 24-h dietary recall method for adolescents in Europe. *International journal of obesity (2005)*. 2008 Nov;32 Suppl 5:S26-34.
20. Beghin L, Castera M, Manios Y, Gilbert CC, Kersting M, De Henauw S, et al. Quality assurance of ethical issues and regulatory aspects relating to good clinical practices in the HELENA Cross-Sectional Study. *International journal of obesity (2005)*. 2008 Nov;32 Suppl 5:S12-8.
21. Ward DS, Evenson KR, Vaughn A, et al. Accelerometer use in physical activity: best practices and research recommendations. *Medicine and science in sports and exercise*. 2005 Nov;37(11 Suppl):S582-8.
22. Martinez-Gomez D, Ruiz JR, Ortega FB, et al. Recommended levels of physical activity to avoid an excess of body fat in European adolescents: the HELENA Study. *American journal of preventive medicine*. 2010 Sep;39(3):203–11.

23. Strong WB, Malina RM, Blimkie CJR, et al. Evidence based physical activity for school-age youth. *The Journal of pediatrics*. 2005 Jun;146(6):732–7.
24. Services USD of H and H. Physical Activity Guidelines for Americans. 2008;
25. Rey-López JP, Ruiz JR, Ortega FB, Verloigne M, Vicente-Rodriguez G, Gracia-Marco L, et al. Reliability and validity of a screen time-based sedentary behaviour questionnaire for adolescents: The HELENA study. *European Journal of Public Health*. 2012 Jun 1;22(3):373–7.
26. American Academy of Pediatrics C on PE. Children, Adolescents, and Television. *Paediatrics*. 2011;107.
27. Brussaard JH, Lowik MRH, Steingrimsdottir L, et al. A European food consumption survey method--conclusions and recommendations. *European journal of clinical nutrition*. 2002 May;56 Suppl 2:S89-94.
28. Biro G, Hulshof KFAM, Ovesen L, et al. Selection of methodology to assess food intake. *European journal of clinical nutrition*. 2002 May;56 Suppl 2:S25-32.
29. Michels KB. Nutritional epidemiology--past, present, future. *International Journal of Epidemiology*. 2003 Aug 1;32(4):486–8.
30. Commission of the European Communities. Green Paper “Promoting healthy diets and physical activity: a European dimension for the prevention of overweight, obesity and chronic diseases.” Com. 2005.
31. Nagy E, Vicente-Rodriguez G, Manios Y, et al. Harmonization process and reliability assessment of anthropometric measurements in a multicenter study in adolescents. *International journal of obesity (2005)*. 2008 Nov;32 Suppl 5:S58-65.
32. Cole TJ, Lobstein T. Extended international (IOTF) body mass index cut-offs for thinness, overweight and obesity. *Pediatric Obesity*. 2012 Aug;7(4):284–94.
33. Tanner JM, Whitehouse RH. Clinical longitudinal standards for height, weight, height velocity, weight velocity, and stages of puberty. *Archives of disease in childhood*. 1976 Mar;51(3):170–9.
34. Miguel-Berges ML, Santaliestra-Pasias AM, Mouratidou T, De Miguel-Etayo P, Androutsos O, De Craemer M, et al. Combined Longitudinal Effect of Physical Activity and Screen Time on Food and Beverage Consumption in European Preschool Children: The ToyBox-Study. *Nutrients*. 2019 May;11(5).
35. Pearson N, Atkin AJ, Biddle SJ, et al. Patterns of adolescent physical activity and dietary behaviours. *The international journal of behavioral nutrition and physical*

- activity. 2009 Jul;6:45.
36. Al-Hazzaa HM, Abahussain NA, Al-Sobayel HI, et al. Physical activity, sedentary behaviors and dietary habits among Saudi adolescents relative to age, gender and region. *The international journal of behavioral nutrition and physical activity*. 2011 Dec;8:140.
 37. Kelishadi R, Ardalan G, Gheiratmand R, et al. Association of physical activity and dietary behaviours in relation to the body mass index in a national sample of Iranian children and adolescents: CASPIAN Study. *Bulletin of the World Health Organization*. 2007 May;85(18):19–26.
 38. Manz K, Mensink GBM, Finger JD, Haftenberger M, Brettschneider A-K, Lage Barbosa C, et al. Associations between Physical Activity and Food Intake among Children and Adolescents: Results of KiGGS Wave 2. *Nutrients*. 2019 May;11(5).
 39. Hobbs M, Pearson N, Foster PJ, et al. Sedentary behaviour and diet across the lifespan: an updated systematic review. *British journal of sports medicine*. 2015 Sep;49(18):1179–88.
 40. Ashdown-Franks G, Vancampfort D, Firth J, Smith L, Sabiston CM, Stubbs B, et al. Association of leisure-time sedentary behavior with fast food and carbonated soft drink consumption among 133,555 adolescents aged 12–15 years in 44 low- and middle-income countries. *International Journal of Behavioral Nutrition and Physical Activity*. 2019;16(1):35.
 41. Koehler K, Boron JB, Garvin TM, Bice MR, Stevens JR. Differential relationship between physical activity and intake of added sugar and nutrient-dense foods: A cross-sectional analysis. *Appetite*. 2019 Sep;140:91–7.
 42. Jashinsky J, Gay J, Hansen N, Muilenburg J. Differences in TV Viewing and Computer Game Playing's Relationships with Physical Activity and Eating Behaviors among Adolescents: An NHANES Study. *American Journal of Health Education*. 2017 Jan 2;48(1):41–7.
 43. Koezuka N, Koo M, Allison KR, Adlaf EM, Dwyer JJM, Faulkner G, et al. The Relationship between Sedentary Activities and Physical Inactivity among Adolescents: Results from the Canadian Community Health Survey. *Journal of Adolescent Health*. 2006;39(4):515–22.
 44. Black JL, Billette J-M. Fast food intake in Canada: Differences among Canadians with diverse demographic, socio-economic and lifestyle characteristics. *Canadian*

- Journal of Public Health. 2015;106(2):e52–8.
45. Wardle J, Haase AM, Steptoe A, Nillapun M, Jonwutiwes K, Bellis F. Gender differences in food choice: The contribution of health beliefs and dieting. *Annals of Behavioral Medicine*. 2004;27(2):107–16.
 46. Cavadini C, Decarli B, Grin J, Narring F, Michaud P-A, et al. Food habits and sport activity during adolescence: differences between athletic and non-athletic teenagers in Switzerland. *European Journal of Clinical Nutrition*. 2000 Mar 1;54(S1):S16–20.
 47. Klepp K-I, Wind M, de Bourdeaudhuij I, et al. Television viewing and exposure to food-related commercials among European school children, associations with fruit and vegetable intake: a cross sectional study. *The International Journal of Behavioral Nutrition and Physical Activity*. 2007 Sep 27;4:46.
 48. Fletcher EA, McNaughton SA, Crawford D, Cleland V, Della Gatta J, Hatt J, et al. Associations between sedentary behaviours and dietary intakes among adolescents. *Public health nutrition*. 2018/01/10. 2018 Apr;21(6):1115–22.
 49. Giese H, König LM, Tăut D, Ollila H, Băban A, Absetz P, et al. Exploring the association between television advertising of healthy and unhealthy foods, self-control, and food intake in three European countries. *Applied psychology Health and well-being*. 2015 Mar;7(1):41–62.
 50. Sui Z, Zheng M, Zhang M, et al. Water and Beverage Consumption: Analysis of the Australian 2011-2012 National Nutrition and Physical Activity Survey. *Nutrients*. 2016 Oct;8(11).
 51. Ekelund U, Luan J, Sherar LB, Esliger DW, Griew P, Cooper A, et al. Moderate to Vigorous Physical Activity and Sedentary Time and Cardiometabolic Risk Factors in Children and Adolescents. *JAMA*. 2012 Feb 15;307(7):704–12.
 52. Arouca A, Moreno LA, Gonzalez-Gil EM, Marcos A, Widhalm K, Molnár D, et al. Diet as moderator in the association of adiposity with inflammatory biomarkers among adolescents in the HELENA study. *European Journal of Nutrition*. 2019;58(5):1947–60.
 53. Martinez-Gomez D, Gomez-Martinez S, Ruiz JR, Diaz LE, Ortega FB, Widhalm K, et al. Objectively-measured and self-reported physical activity and fitness in relation to inflammatory markers in European adolescents: The HELENA Study. *Atherosclerosis*. 2012;221(1):260–7.
 54. Segovia-Siapco G, Khayef G, Pribis P, Oda K, Haddad E, Sabaté J. Animal

- Protein Intake Is Associated with General Adiposity in Adolescents: The Teen Food and Development Study. Vol. 12, *Nutrients* . 2020.
55. Lin Y, Mouratidou T, Vereecken C, Kersting M, Bolca S, de Moraes ACF, et al. Dietary animal and plant protein intakes and their associations with obesity and cardio-metabolic indicators in European adolescents: the HELENA cross-sectional study. *Nutrition Journal*. 2015;14(1):10.
 56. Santaliestra-Pasías AM, González-Gil EM, Pala V, Intemann T, Hebestreit A, Russo P, et al. Predictive associations between lifestyle behaviours and dairy consumption: The IDEFICS study. *Nutrition, metabolism, and cardiovascular diseases : NMCD*. 2020 Mar;30(3):514–22.
 57. Moreno LA, Bel-Serrat S, Santaliestra-Pasias A, et al. Dairy products, yogurt consumption, and cardiometabolic risk in children and adolescents. *Nutrition reviews*. 2015 Aug;73 Suppl 1:8–14.

1 Table 1. Descriptive characteristics of the study sample (N=1448, 45% males)

2

Variable	Males (N=646)	Females (N=802)	
	Mean (95%CI) (continuous variables)/ n (%) (categorical variables)	Mean (95%CI) (continuous variables)/ n (%) (categorical variables)	p value ^a
SOCIODEMOGRAPHIC FACTORS			
Age (y)	14.6 (14.5;14.7)	14.7 (14.6; 14.8)	0.517
BMI (kg/m ²)	20.8 (20.6;21.1)	21.1 (20.9; 21.3)	0.153
Age category (y)			
12.5-13.99	224 (34.7)	267 (33.3)	0.431
14-14.99	164 (25.4)	212 (26.4)	
15-15.99	153 (23.7)	195 (24.3)	
16-17.49	105 (16.3)	128 (16.0)	
BMI category (kg/m ²)			
≤18 .5	40 (6.2)	60 (7.5)	0.371
18.5-<25	469 (72.6)	583 (72.7)	
≥25-<30	101 (15.69	128 (16.0)	
≥30	36 (5.6)	31(3.9)	
Mother educational level			
Lower	33 (5.3)	60 (7.8)	0.171
Lower secondary	152 (24.5)	183 (23.7)	
Higher secondary	176 (28.3)	236 (30.5)	
Higher	260 (41.9)	294 (38.0)	
Tanner stage			
1	7 (1.1)	0 (0)	0.006
2-4	455 (72.5)	551 (70.3)	
5	166 (26.4)	233 (29.7)	
PHYSICAL ACTIVITY*			
<60min/day	280 (43.3)	591 (73.7)	<0.001
≥60min/day	366 (56.7)	211 (26.3)	
SEDENTARY BEHAVIORS GROUPS**			
SB ≥2h /day	482 (74.8)	424 (52.9)	<0.001
SB <2h /day	162 (25.2)	378 (47.1)	
COMBINED GROUPS n (%)***			
Group 1.			
SB≥2h/day	224 (15.5)	324 (22.4)	<0.001
PA<60min/day			
Group 2.			
SB<2h/day	56 (3.8)	267 (18.5)	
PA<60min/day			

Group 3.			
SB \geq 2h/day	258 (17.8)	100 (6.9)	
PA \geq 60min/day			
Group 4.			
SB<2h/day	108 (7.4)	111 (7.7)	
PA \geq 60min/day			
FOOD GROUPS INTAKE (g or ml/ day)			
F&V	223.1 (213.1;233.0)	219.91 (212.4;227.4)	0.612
Cereals	250.1 (242.4;257.8)	194.4 (188.8;200.0)	<0.001
Fish, meat and eggs	201.8 (195.1;208.7)	162.9 (158.1;167.7)	<0.001
Milk	212.3 (196.5;228.1)	139.6 (129.5;149.6)	<0.001
Yogurt	40.6 (35.0;46.2)	35.4 (31.6; 39.3)	<0.001
Savory snacks	10.1 (8.6;11.5)	6.3 (5.6;7.2)	<0.001
Sweet snacks	82.7 (94.5;103.9)	99.2 (79.4;86.0)	<0.001
Fats and oils	18.7 (17.2;20.1)	14.7 (13.8;15.7)	<0.001
Water	788.1 (745.6;830.5)	753.4 (718.7;788.0)	0.209
SSB	342.2 (315.6;368.7)	196.3 (181.6;211.01)	<0.001
Abbreviations: CI: confidence interval; y: years; BMI: body mass index; MVPA: moderate to vigorous physical activity; SB: sedentary behaviors; PA; physical activity; F&V: fruit and vegetables; SSB; sugar sweetened beverages.			
* PA based on recommendations (<1h; \geq 1h).			
**SB categories were based on screen time recommendations (<2h/day; \geq 2h/day).			
*** Combined groups from PA and sedentary behaviors recommendations.			
Bold letters were statistically significant by sex.			
^a (p values lower than 0.05 were considered statistically significant).			

Table 2. Analysis of covariance of food groups consumption by the combination of meeting or not physical activity and sedentary behaviors recommendations in males (n=646) and females (n=802).

		Group 1. SB*\geq2h/day PA **$<$60min/day		Group 2. SB*$<$2h/day PA **$<$60min/day		Group 3. SB*\geq2h/day PA ** \geq60min/day		Group 4. SB*$<$2h/day PA **\geq60min/day		
MALES		N=247		N=56		N=258		N=108		
FOOD GROUPS (g or ml/day)		Mean	CI	Mean	CI	Mean	CI	Mean	CI	P value
	F&V	222.6	205.6;239.7	236.9	2203.1;270.7	220.0	204.0;235.9	240.8	216.5;265.26	0.474
	Cereals	251.8	240.0;263.5	235.9	212.5;259.2	252.0	240.9;263.0	248.1	231.3;264.9	0.640
	Fish, meat and eggs	205.8	194.6;217.0	204.7	182.6;226.9	195.6	185.1;206.1	202.4	186.4;218.4	0.602
	Milk	202.6	147.9;230.2	220.8	166.0;275.7	202.3	176.4;228.2	258.5	218.9;298.06	0.097
	Yogurt	29.8	(19.9;39.7) ^a	38.3	18.7;57.9	45.1	35.8;54.3	58.7	(44.6;72.8) ^a	0.008
	Savory snacks	10.5	8.1;12.8	8.3	3.7;12.9	11.2	9.0;13.4	6.7	3.3;10.0	0.133
	Sweet snacks	99.9	92.8;107.0	107.9	93.9;122.0	98.9	92.2;105.5	92.1	81.9;102.3	0.330
	Fats and oils	19.3	16.9;21.6	16.7	12.0; 21.3	17.7	15.5;19.9	21.8	18.4;25.2	0.178
	SSB	351.7	309.9;393.5	284.0	201.2;366.9	350.4	311.33;389	283.7	223.9;343.5	0.141
	Water	768.1	694.3;842.0	697.3	550.8;843.7	788.8	719.6;857.9	916.6	811.0;1022.3	0.062
FEMALES		n=324		n=267		n=100		n=111		

		Mean	(IC)	Mean	(IC)	Mean	(IC)	Mean	(IC)	p value
FOOD GROUPS (g or ml/day)	F&V	214.0	202.0;225.9	220.2	206.9;233.5	222.0	200.0;244.0	243.8	223.2;264.3	0.109
	Cereals	183.3	(175.3;191.4) ^a	202.7	(193.8;211.7) ^a	198.4	183.6;213.2	198.6	184.7;212.4	0.011
	Fish, Meat, and eggs	174.8	(167.7;181.8) ^a	155.4	(147.6;163.3) ^a	157.5	144.5;170.4	155.9	143.8;168.0	0.001
	Milk	138.0	122.4;153.7	139.7	122.3;157.1	127.7	98.9;156.5	150.9	124.0;177.8	0.717
	Yogurt	31.4	25.3;37.6	38.1	31.3;44.9	28.1	16.8;39.4	47.0	36.5;57.5	0.040
	Savory snacks	7.3	6.0;8.6	5.7	4.3;7.1	7.1	4.8;9.5	4.2	2.0;6.4	0.720
	Sweet snacks	83.1	78.5;87.6	83.5	778.4;88.5	79.5	71.1;87.9	85.0	77.2;92.9	0.810
	Fats and oils	14.5	13.1;16.0	15.3	13.7;16.8	15.9	13.3;18.5	13.1	10.7;15.6	0.394
	SSB	186.4	163.2;209.6	179.0	153.2;204.8	246.7	203.9;289.4	213.3	173.4;253.2	0.039
	Water	772.0	716.2;827.8	746.1	684.1;808.1	733.0	630.4;835.7	827.1	731.2;923.0	0.49

Abbreviations: SB: sedentary behaviors; PA: physical activity; CI: confidence interval; F&V: Fruit and vegetables; SSB: sugar sweetened beverages

a: Significant differences in food or beverage consumption between Group 1 and Group 2.

Bold letters shown significant differences in food or beverage consumption between all SB and PA groups (1 to 4).

*SB categories were based on screen time recommendations (<2h/day; ≥2h/day).

** PA based on recommendations (<1h; ≥1h).

Adjusted by Maternal education, Tanner stage, BMI and energy intake.
(p values lower than 0.05 were considered statistically significant).

1 Table 3. Generalized linear regression models of food group consumption by physical
2 activity and sedentary behaviors categories in male and female adolescents (n=1448)

FOOD GROUPS (g or ml/day)	Group 4, SB* \leq 2h/day PA** \geq 60min	Group,1 SB* \geq 2h/day PA** \leq 60min /day		Group 2, SB* \leq 2h/day PA** \leq 60min/day		Group 3, SB* \geq 2h/day PA** \geq 60min	
		β	CI	β	CI	β	CI
MALES n=646							
F&V	Ref	-24.95	-54.89;3.81	-5.3	-46.86;36	-25.54	-54.89;3.81
Cereals	Ref	-1.82	-20.04;16.40	-10.99	-36.20;14.21	6.4	-11.55;24.36
Fish, meat and eggs	Ref	-2.62	-20.25;15.00	-2.28	-26.69;22.12	-7.78	-25.24;9.58
Fats and oils	Ref	-1.68	-5.48;2.10	-2.00	-7.26;3.24	-3.04	-6.77;0.69
Milk	Ref	-64.32	-107.90;-20.74	-67.23	-128.25; -6.22	-51.95	-94.82; -9.08
Yogurt	Ref	-24.47	-40.55; -8.39	-25.86	-48.37; -3.34	-8.91	-24.73;6.89
Savory snacks	Ref	4.23	0.15;8.31	1.36	-4.28;7.01	4.69	0.67;8.71
Sweet snacks	Ref	9.83	-2.27;21.94	16.73	-0.00;33.47	7.02	-4.90;18.95
Water	Ref	$\bar{132.78}$	-259.79; -5.78	-195.49	-370.89;-20.09	$\bar{108.06}$	$\bar{233.23}$;17.11
SSB	Ref	93,19	24,38;163,01	37,59	-57,59;132,79	81,92	14,11;149,72
FEMALES n=802							
F&V	Ref	-28.72	-52.80; -4.64	-23.39	-47.90;1.10	-23.82	-53.92;6.28
Cereals	Ref	-9.73	-24.43;4.9	4.93	-9.99;19.85	-5.86	-24.13;12.41
Fish, meat and eggs	Ref	22.59	9.62;35.5	1.50	-11.67;14.67	8.1	-7.99;24.26
Fats and oils	Ref	3.03	0.50;5.56	3.72	1.15;6.30	3.45	0.30;6.61
Milk	Ref	-7.03	-37.04;22.97	-11.97	-42.46;18.50	-10.54	-47.89;26.79
Yogurt	Ref	-11.30	-23.54;0.933	-5.64	-18.126;6.83	-14.73	-30.02;0.55
Savory snacks	Ref	2.89	0.32;5.46	1.37	-1.24;4.00	2.65	-0.57;5.87
Sweet snacks	Ref	-3.14	-12.16;5.87	-0.86	-10.04;8.3	-6.57	-17.81;4.66

Water	Ref	-74.18	-183.27;34.89	-102.77	-213.46;7.90	- 130.4 0	-266.02;5.21
SSB	Ref	-8.83	-53.15;35.48	-16.61	-61.71;28.47	28.53	-26.67;83.75

Abbreviations: SB: sedentary behaviors; PA: physical activity; CI: confidence interval; F&V: Fruit and vegetables; SSB: sugar sweetened beverages.

Bold letters were statistically significant between Group 1, 2 or 3 and the reference Group (Group 4).
(p values lower than 0.05 were considered statistically significant).

*SB categories were based on screen time recommendations (<2h/day; ≥2h/day)

** PA based on recommendations (<1h; ≥1h).

Adjusted by Tanner, Maternal Education, BMI, energy intake.

3

4